

SPECIFICATIONS					
Model Name			Discontinued		iP-750E
Type			3 primary Color LCD Shutter Projection Type		
Main Part Specification	LCD Panel	Size	0.7 inches X 3 Panels, Aspect Ratio 4:3	1.0 inches X 3 Panels, Aspect Ratio 4:3	1.3 inches X 3 Panels, Aspect Ratio 4:3
		Drive System	Poly Silicon TFT Active Matrix with Micro Lens Array		
		Number of Pixels	786,432 pixels (1,024 X 768 dots) X 3		
		Arrangement	Stripe		
	Projection Lens		Manual Zoom: 1 to 1.2x	Manual Zoom: 1 to 1.25x	Manual Zoom: 1 to 1.3x
	Optical Source		180W Super High-pressure Mercury Lamp	260W Super High-pressure Mercury Lamp	300W Super High-pressure Mercury Lamp
Image Size		Screen Size	32-300 inches diagonal		
		Projection Distance	1.5 to 11.3 m	1.4 to 13.9 m	1.4 to 13 m
Color Reproducibility			Full color (16,770,000 colors)		
Brightness			2,000 ANSI lumens	3,000 ANSI lumens	4,500 ANSI lumens
Scan Frequency			Horizontal 21 to 68.7 kHz, Vertical 50 to 85 Hz		
Maximum Resolution (At RGB signal input)			1,024 X 768 dots (Compressed display of 1,280 X 1,024 dots is possible.)	1,024 X 768 dots (Compressed display of 1,600 X 1,200 dots is possible.)	
Keystone Correction			Adjustable vertical ± 15°	Adjustable horizontal ± 10°, vertical ± 15°	
OHP Input/Output		Scanner/Camera	2,000,000 pixels color CCD camera		
		Max Scanning Size	288 X 216 mm (11.3 X 8.5 in)		
		Scanner Output	Exif JPEG (1,600 X 1,200 dots)		
		System Requirements	OS Compatibility: Windows®2000 Professional English Ver. (SP3 or higher), Windows®XP English Ver. USB Interface: USB 1.1 or higher		
iP Viewer Functions			Scanner, White board, Print Screen, Zoom, Rotation, Thumbnail display, Pen tool, Data saving		
PC Input/Output	Analog RGB Input	Terminal Panel	15 pin Mini D-sub 1 ch	15 pin Mini D-sub 2 ch	
	Monitor Output	Output Terminal	—	15 pin Mini D-sub 1 ch	
Video Input		Signal system	NTSC/PAL/SECAM/PAL-N/PAL-M/NTSC4.43		
		Input Terminal	RCA Pin Jack 1 ch, S-Video (Mini DIN4-pin) 1ch		
Audio Input/Output	PC Input	Input Terminal	Stereo Mini Jack 1 ch	Stereo Mini Jack 2 ch	
	Video Input	Input Terminal	RCA Pin Jack 1 ch		
	Monitor Output	Output Terminal	—	Stereo Mini Jack 1 ch	
Audio Output			2 W monaural	1 W X 2 stereo	2 W X 2 stereo
USB Connector*			USB connector (Mini B type) 1ch		
Operating Range of Temperature and Humidity			Temperature: 0 to 35°C (32 to 95°F), humidity: 20 to 80% (no condensation)		
Power Source			100-120/220-240VAC, 50/60 Hz		
Power Consumption			290W (100-120VAC), 280W (220-240VAC)	390W (100-120VAC), 370W (220-240VAC)	450W (100-120VAC), 425W (220-240VAC)
Input Current			2.9A (100-120VAC), 1.2A (220-240VAC)	4.5A (100-120VAC), 2.2A (220-240VAC)	5A (100-120VAC), 2.5A (220-240VAC)
External Dimensions			310 (W) X 405 (D) X 140 (H) mm /12.2 (W) X 15.9 (D) X 5.5 (H) in (not including protrusions, Including the cover)	400 (W) X 315 (D) X 145 (H) mm /15.7 (W) X 12.4 (D) X 5.7 (H) in (not including protrusions, Including the cover)	390 (W) X 380 (D) X 190 (H) mm /15.4 (W) X 15.0 (D) X 7.5 (H) in (not including protrusions, Including the cover)
Weight			5.6 kg (approx. 12.3 lbs.)	7.3 kg (approx. 16.1 lbs.)	8.5 kg (approx. 18.9 lbs.)
Accessories			Power Cord (3 m), Remote Control, User's Manual, Battery (Coin-type lithium battery: CR2025), PC cable, Lens cap, spare air filter	Power Cord (3 m), Remote Control, User's Manual, Battery (AA X 2), PC cable, Lens cap	
Lamp Kit			MPLK-C1	MPLK-D2	MPLK-D1

* USB connectors are not guaranteed to work with all personal computers.

Caution

- LCD panels are inherently susceptible to pixel defects.
- A DC type super high pressure lamp is used in this projector and it is rare for the lamp to explode during use. The unit is also designed to forcibly turn off the lamp because there is a high possibility that the lamp will break if it is used beyond the limit of lamp usage time.
- Light polarizing elements such as the light source lamp and the liquid crystal panel are parts that have a limited service life. When used for a long time, repair and replacement will be necessary.
- Microsoft, Encarta, MSN, and Windows are either registered trademarks or trademarks of Microsoft Corporation in the United States and/or other countries.
- Company names and commodity names are trade names, trade marks or registered trade marks of each company.
- Specifications and designs are subject to change without prior notice in order to improve the product.



iP Series intelligent projector employs a 3LCD system.



ISO 14001
JQA-EM0156
YOKOHAMA PLANT
SAGAMI PLANT



ISO 9001
JQA-1361

<http://www.avio.co.jp/>

NIPPON AVIONICS CO.,LTD.

Partner Business Department

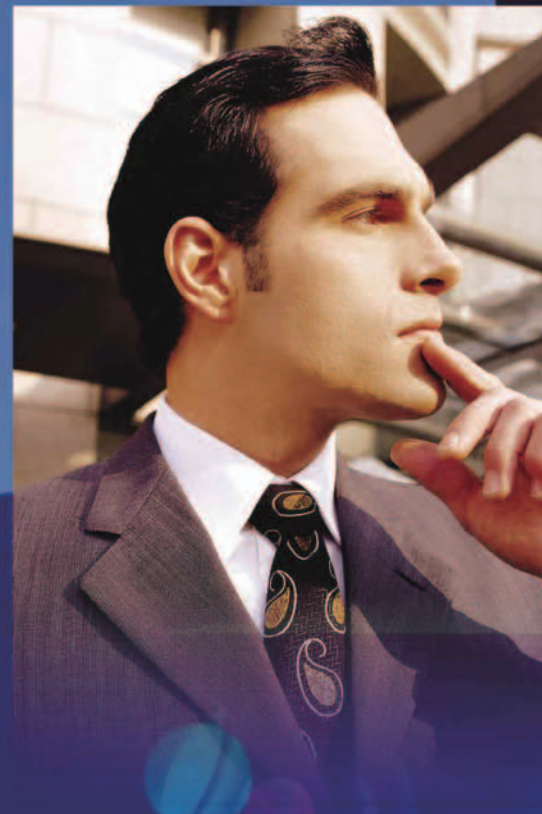
Gotanda kowa Bldg 1-5, Nishi-Gotanda 8-chome,
shinagawa-ku, Tokyo 141-0031, Japan
Phone: 81-3-5436-0625 Fax: 81-3-5436-0639



iP Series

Intelligent Projector

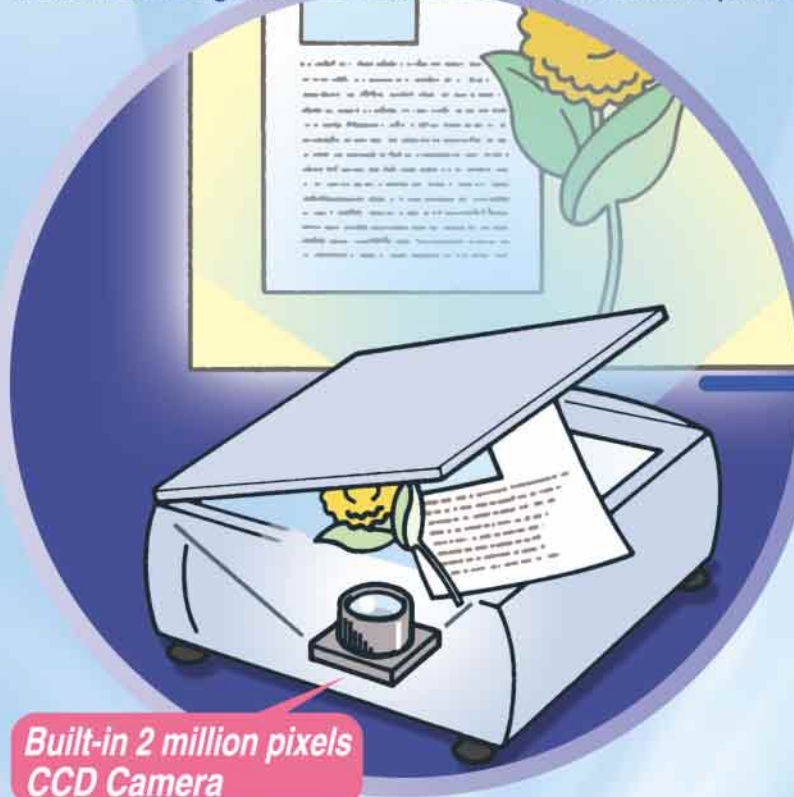
Discontinued iP-550E / iP-750E



Deliver more intelligent presentations

Easy, clear projection of objects and documents

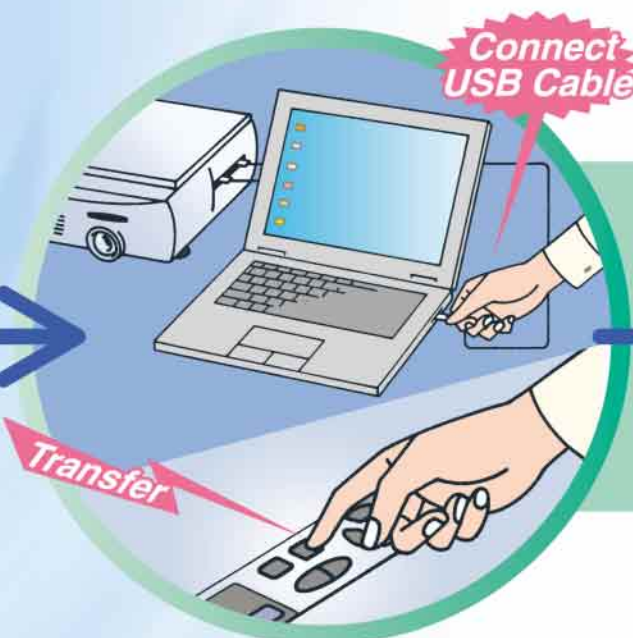
It has a built-in high resolution document camera of 2 million pixels.



- An image of a document or a solid object can be projected onto the screen by simply placing them on the glass window of the unit.
- It enables an easy and effective presentation even without having a PC.
- Up to 32 images can be temporarily stored in its internal memory.

Easy transferring of images to PC

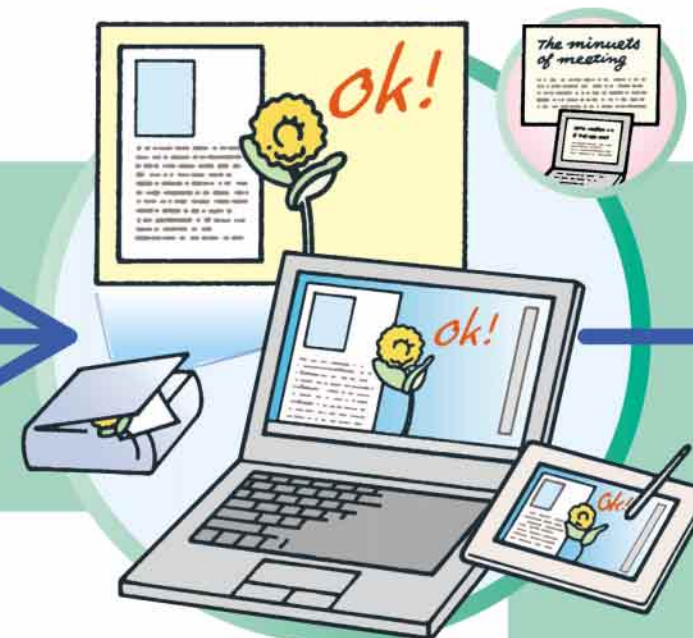
Images stored in its internal memory can be transferred to a PC via USB connection.



- No software installation procedure required.
- iP Viewer software will automatically boot up by simply connecting the cable.
- An image from the document camera can be transferred by a simple button action.

Effective presentation with annotation

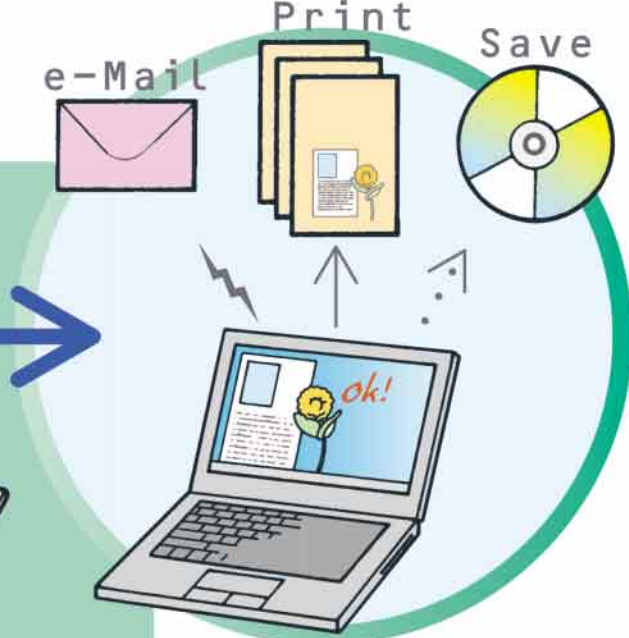
The projection screen becomes a white board.



- During presentation, you can write on the projected image from a document camera or from the data stored in a PC or on the blank white board screen using the pen tool of iP Viewer.
- Writing can be accomplished by using the pen tablet available on the market in addition to using the mouse.
- Zooming or rotational display of the projected image can also be made.

Storage and distribution of your presentations

The projected presentation material with additional information written over it can be stored.



- This feature is convenient when using the same material repeatedly, or printing out or mailing out the material.

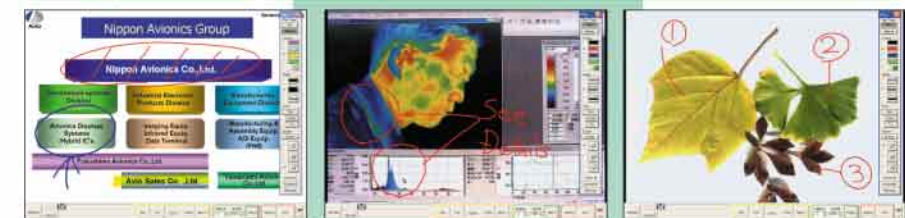
iP Series

Intelligent Projector

The Avio Multiprojector advances again with the birth of the Intelligent Projector IP Series. Combined function with a PC is improved by the addition of a USB port. The IP Series intelligently realizes a new level of highly effective presentations.



Examples of Image



Presentation material Technical discussion Educational material



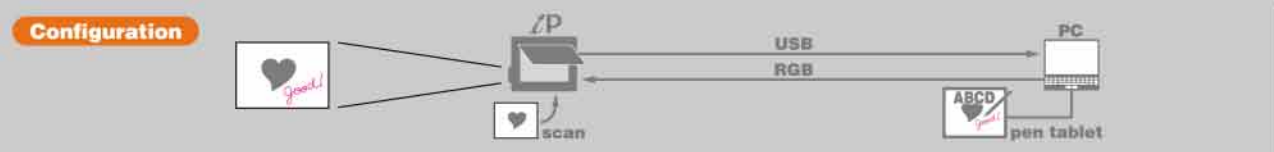
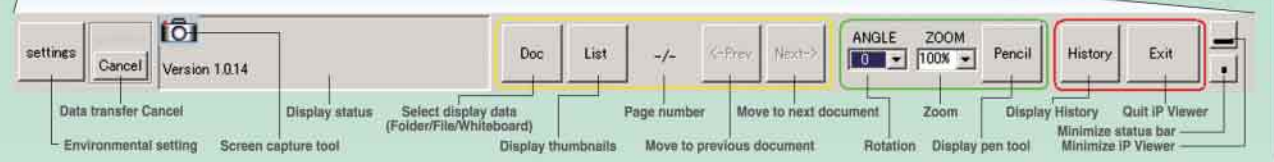
It is a presentation software dedicated for the iP series.

- The software will automatically boot up by connecting the iP series and a PC.
- No software installation procedure required.

Software operating conditions
OS Compatibility: Windows 2000 Professional English Ver. (SP3 or higher), WindowsXP English Ver.
USB Interface: USB 1.1 or higher



Initial screen image Transferred-Image White Board use



Intelligent Projector **iP-25E**

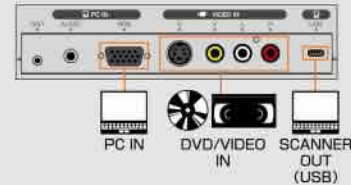
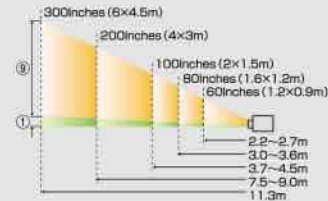


2,000 ANSI lm
SXGA Compatible
USB

Discontinued

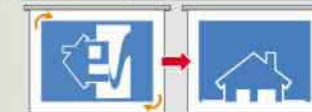
Various functions of iP series are integrated into a compact body. It is the entry level model which can be easily used in a conference room or a classroom.

Advanced functions provide outstanding value in a compact format.



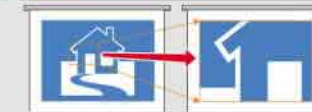
for Education

A4 size vertical/horizontal display function



Vertically oriented document can be rotated 90° on the screen with automatic aspect ratio adjustment.

Zoom and scroll function



Up to 6.25 times zooming and screen scrolling after zooming are available.

Memory function



Up to 32 projected images can be temporarily stored in a memory for projection at a later time.

Keystone correction function



Image distortion caused by the projection angle can be corrected without adjusting the tilt foot of the main unit. (iP-25E: ±15° vertically. iP-55E/iP-750E: ±10° horizontally and ±15° vertically.)

Pointer function



A pointer can be displayed on the projection screen and manipulated freely using a remote controller or a button on the main unit.

Blank screen function



Projection can be temporarily stopped.

Large screen projection



Projection can be made on various screen sizes, from minimum 32 inch to maximum 300 inch (approximately 6m×4.5m).

Intelligent Projector **iP-55E**

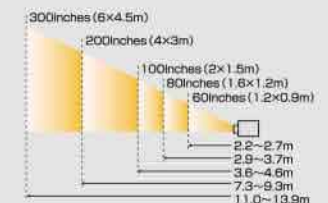


3,000 ANSI lm
UXGA Compatible
USB

Discontinued

It is the standard model capable of handling all kinds of presentation. It will help to make your discussions fruitful and in making quick decisions. Furthermore, the images are clearly visible even with the room lights on.

Supports a wide range of presentations, for a new office standard.



for Business

Intelligent Projector **iP-750E**



4,500 ANSI lm
UXGA Compatible
USB

It is the high end model with high brightness of 4,500 ANSI lumens. Its sharp images will help to make your presentation effective and convincing in a big conference room.

High-end model boasts a high 4,500 ANSI lumens.

