



QUICK TRAINING GUIDE:

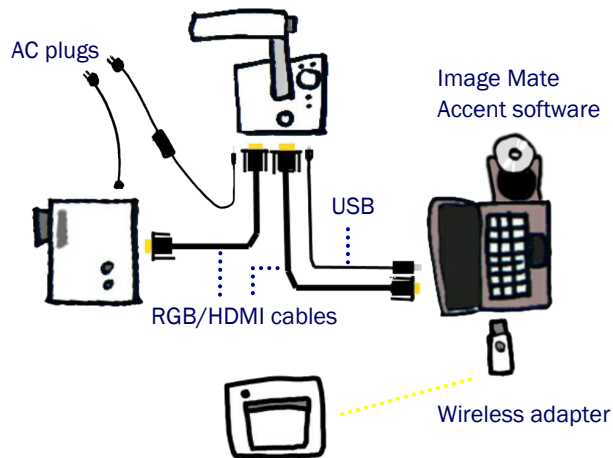
TT-12 + CRA-1 Wireless Tablet



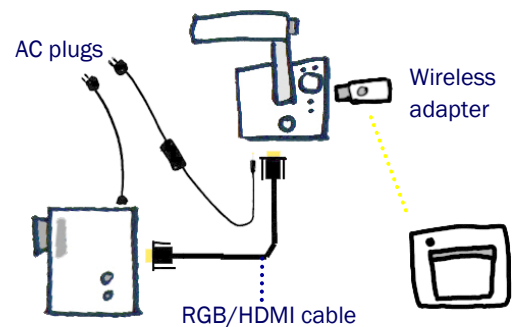
Setting up

1 Configure your classroom. See configurations below.

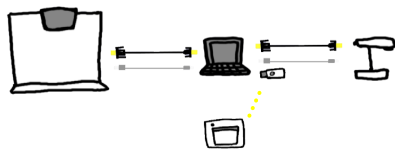
Standard Configuration



Interactive Document Camera Configuration

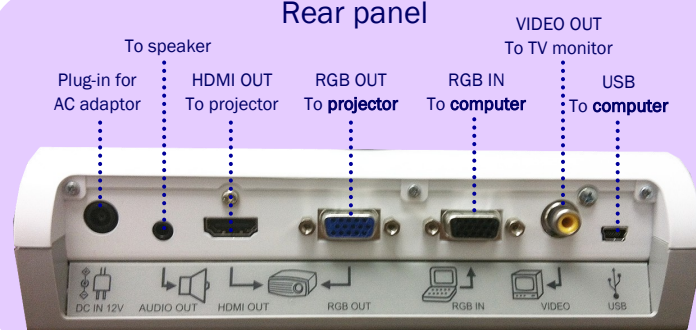


Interactive Whiteboard Configuration



2 Insert batteries into CRA-1 and pen. Charge CRA-1 via USB cable.

Rear panel



TT-12 Basics

1 Zoom

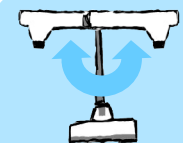
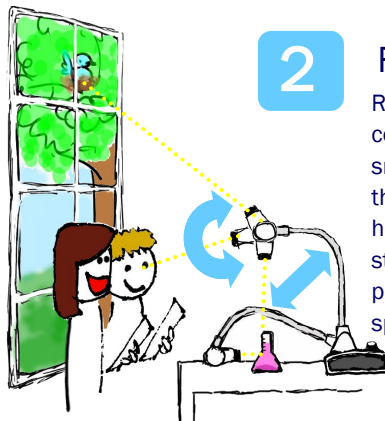
Twist the zoom knob to zoom in/out



Press the Auto-focus button to focus after zooming.

2 Rotate

Rotate the camera column close to a small object or turn the camera head horizontally to view students giving a presentation, speech, etc.



Rotate the arm 180° and position camera head downward for left-handed users.

3

Capture an image and save to SD card/USB flash drive

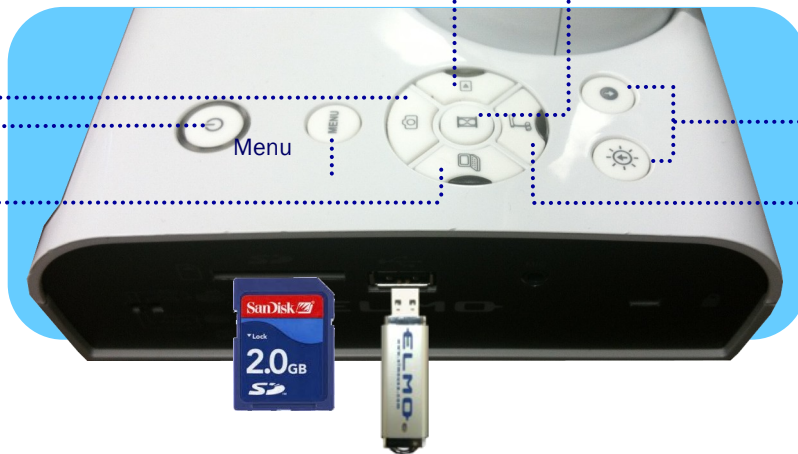
View images/videos from SD card/USB flash drive

Pause the camera image. Press again to unfreeze.

Capture an image and save to SD card/USB flash drive

Power

View computer desktop



Adjust brightness

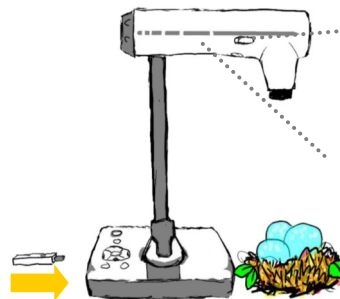
View document camera image

Interactive Document Camera

Add the CRA-1 to control the TT-12 remotely and annotate

1

Power on TT-12 and CRA-1 Wireless Tablet. Insert CRA-1 Wireless Adapter into TT-12.



LED light

Mic records audio when creating video. (See step 3)



2

Zoom & Focus

Use the Pen and Tablet to tap on icons to zoom in/out and focus the image.



Annotate

Tap Next menu to select Pen1/Pen2. Draw on the Tablet to see annotation on displayed image.



Enhance your presentation Refer to Instruction Manual CD for more functions.



Drag the **Highlight** box to focus attention on key areas (hover over border to resize highlight area).



Drag the **Mask** to reveal certain areas.



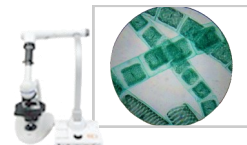
Use the **Zoom and Scroll** to instantly zoom in then drag the pen to pan around the image.



Capture students' curiosity by applying the **Mosaic** feature, letting them predict the displayed object.



Use **Microscope mode** with the **Optional Microscope Attachment** to display slide images for the entire class to see at once.



3

Insert SD Card, Capture and Image, Record video



Output Image switch

If the display appears black, check if the switch is at the proper setting.



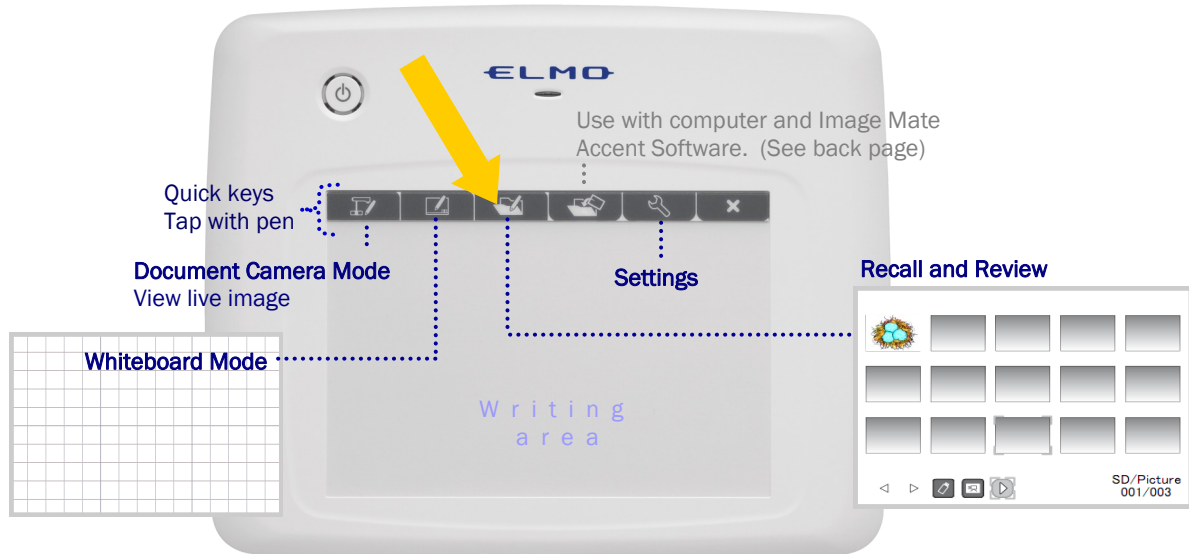
Tap on Picture icon to capture image.

Tap to start video recording. Tap again to end recording.

4

Recall saved images and videos

Take pictures of handouts, worksheets, student work, etc. and save them on the SD card to show quickly and easily during class. With an SD card, you can save images without being connected to a computer.



CRA-1 Wireless Tablet + Image Mate Accent

1

Power on TT-12 and CRA-1 Wireless Tablet. Insert Wireless Adapter into computer.

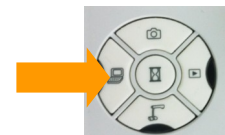
Ensure Image Mate Accent has been installed.

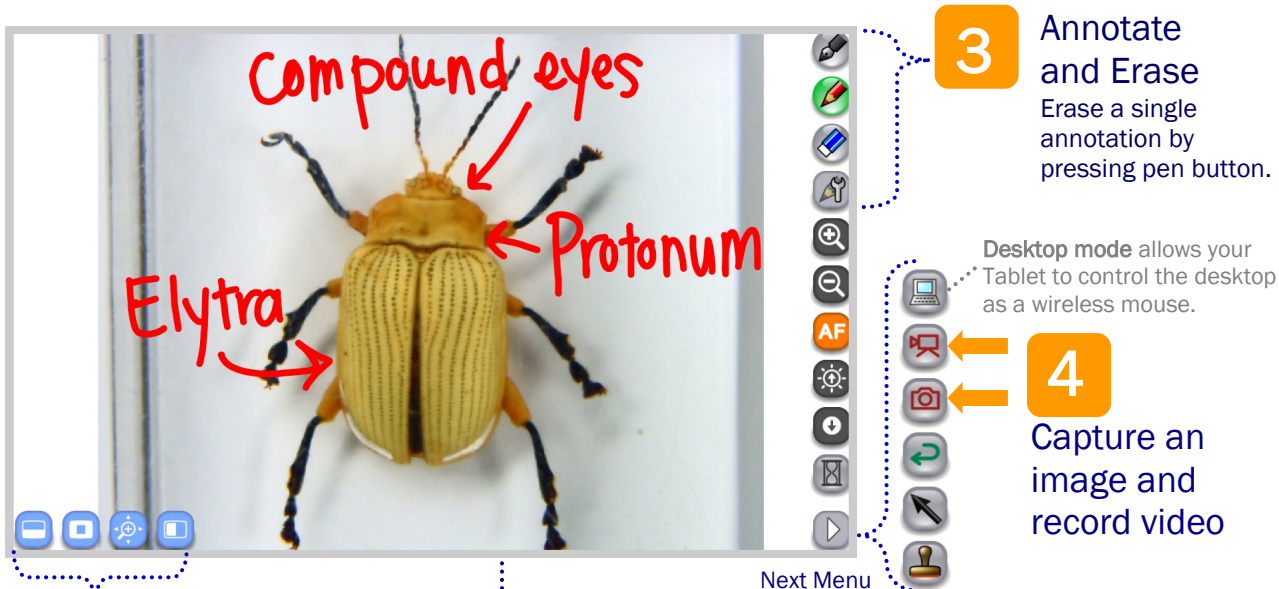


2

On the TT-12, switch to Computer Mode.

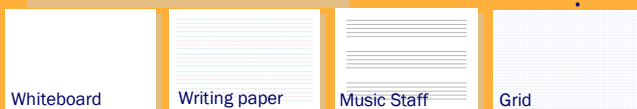
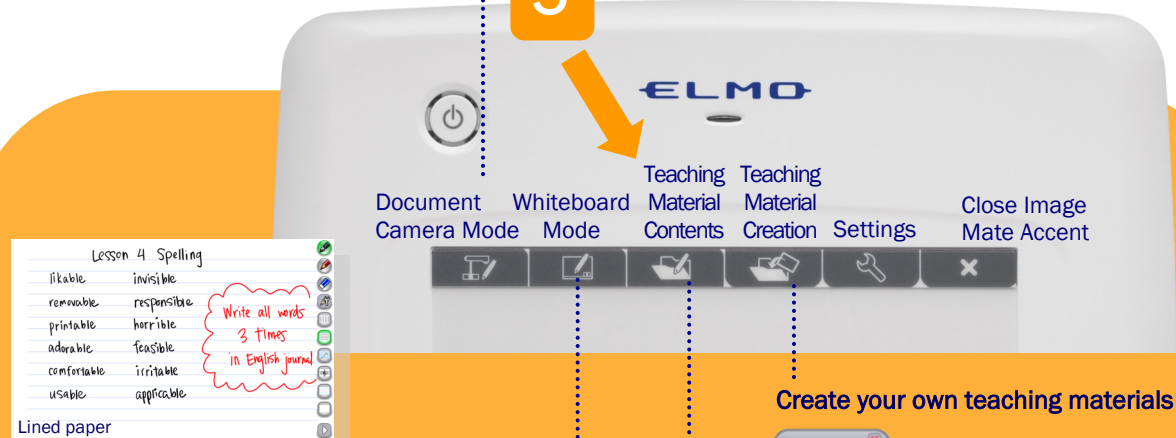
Open Image Mate Accent software.





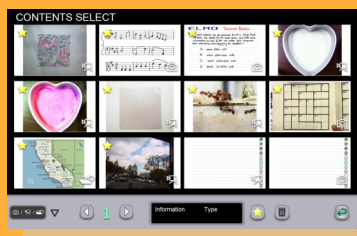
Presentation Tools. Use the **Mask**, **Highlight**, **Scroll** and **Split Screen** features to enhance your lesson.

5 Recall saved images and videos



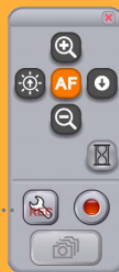
Recall and Review

Double tap to view pictures, play videos and manipulate teaching materials. Use the Star/Favorite icon to keep frequently used files on page 1.



Create your own teaching materials

Import images from your computer to create lesson backgrounds. Add text and stamps then save for future use.



Create Time-lapse videos and Animations

