

QUICK TRAINING GUIDE:

TT-02RX + CRA-1 Wireless Tablet

Setting up

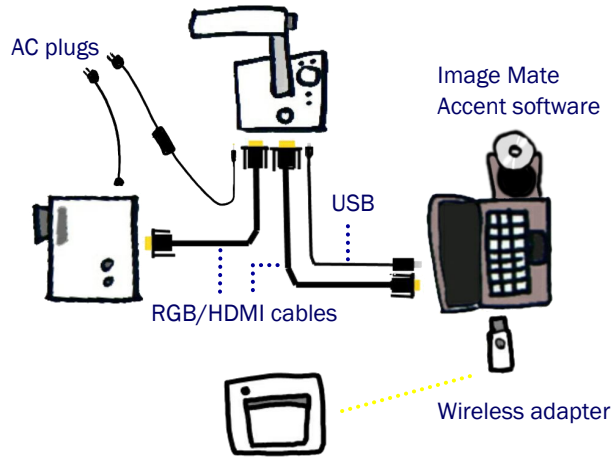
1

Configure your classroom. See configurations below.

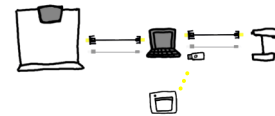
2

Insert batteries into CRA-1 and pen. Charge CRA-1 via USB cable.

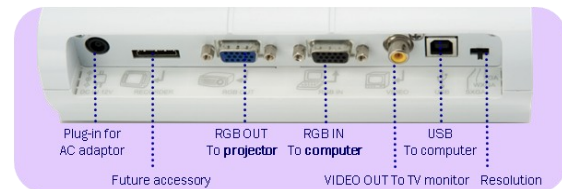
Standard Configuration



Interactive Whiteboard Configuration



Rear panel



TT-02RX Basics

1

Zoom

Twist the zoom knob to zoom in/out.

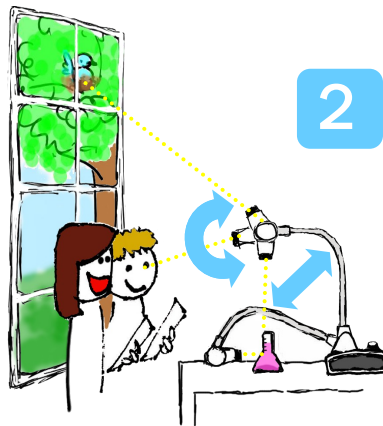


Press the Auto-focus button to focus after zooming.

2

Rotate

Rotate the camera column close to a small object or turn the camera head horizontally to view students giving a presentation, speech, etc.



3

Capture an image and save to SD card

Pause the camera image.
Press again to unfreeze.

Menu

Power

C. Review saved images

View the live image

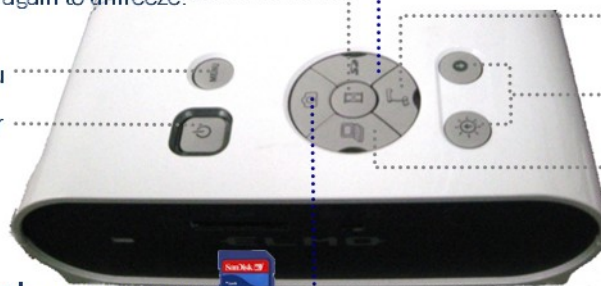
Adjust brightness

View computer desktop

A. Insert SD card



B. Capture image



CRA-1 Wireless Tablet + Image Mate Accent

1

Power on TT-02RX and CRA-1 Wireless Tablet. Insert Wireless Adapter into computer.

Ensure Image Mate Accent has been installed.



2

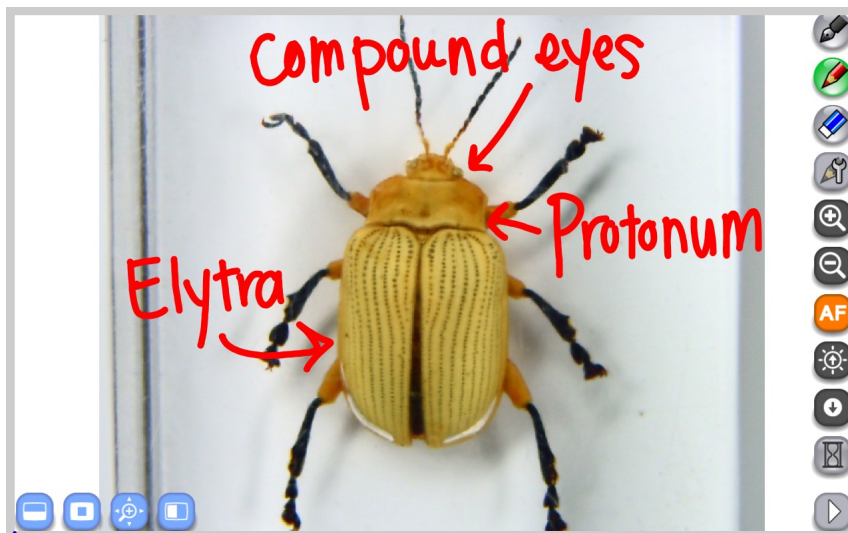
On the TT-02RX, switch to Computer Mode. Open Image Mate Accent software.



3

Annotate and Erase

Erase a single annotation by pressing pen button.



Desktop mode allows your Tablet to control the desktop as a wireless mouse.

4

Capture an image and record video

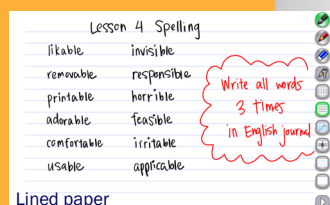


Next Menu

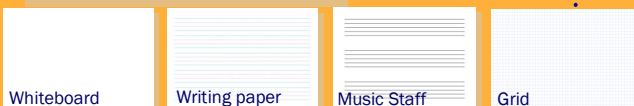
Presentation Tools. Use the **Mask**, **Highlight**, **Scroll** and **Split Screen** features to enhance your lesson.

5

Recall saved images and videos



Lined paper



Whiteboard

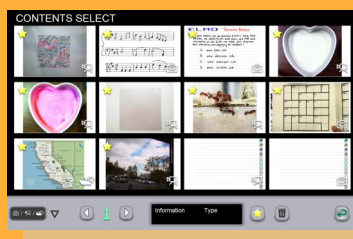
Writing paper

Music Staff

Grid

Recall and Review

Double tap to view pictures, play videos and manipulate teaching materials. Use the Star/Favorite icon to keep frequently used files on page 1.



Create Time-lapse videos and Animations



Create your own teaching materials

Import images from your computer to create lesson backgrounds. Add text and stamps then save for future use.

