

ELMO
DOCUMENT CAMERA

*Share exciting moments
with the whole class!*



TT-02 RX

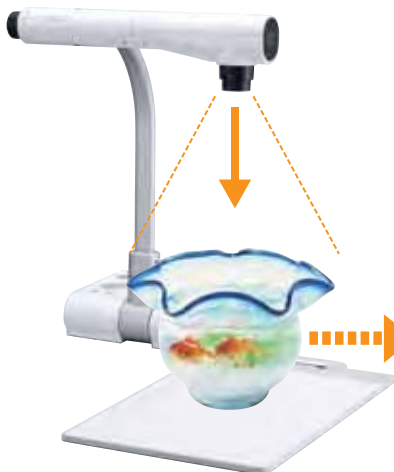
Teacher's + Choice



The Ideal Tool for Great Education. Both Teachers and Students Will Love It!

Do you have challenges keeping your students attention?
Are you pressed for time?
Then the TT-02RX is a simple yet powerful solution!

You Can Show Moving Objects



Standard NTSC TV systems run at 30 fps (frames per second). When the frame rate is above 25 fps, the human eye will recognize it as “full-motion Video.” The TT-02RX can capture images up to 30 fps; this will enable moving objects to appear smooth and natural.



30 frames/sec

15 frames/sec



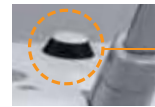
Smooth

Great Benefits for Teachers

Remote Control “FROSTY”

The ergonomic remote control puts lesson enhancing features at the teacher's fingertips. The unique infra-red receiver receives signals from a distance of up to 23 feet in any direction, enabling you to control the TT-02RX from anywhere in the classroom.

Remote Control
“FROSTY” comes with the neck strap.



Receiver

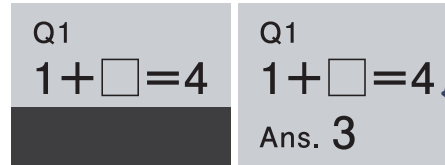
Highlight & Mask

Highlight



Important points can be emphasized.

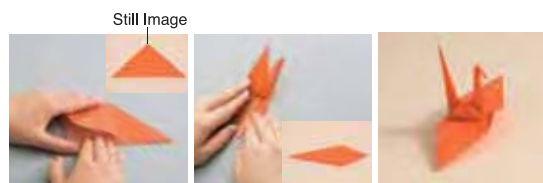
Mask



Specific areas can be hidden using the screenshade.

PinP

A still image can be displayed as a small picture while displaying a live image.



Demonstrate how to make things step-by-step.

Zoom & Scroll

Image can be enlarged and scrolled.

Enlarging Small Objects

Powerful zooming

The TT-02RX has a powerful 5.2x optical zoom with 8x digital zoom. Small objects become large enough for the entire class to see by simply turning the zoom dial. With one touch of the Auto Focus button, details of enlarged images will be crisp and clear.



Optical Zoom **x5.2** × Digital Zoom **x8**
One-Push Auto Focus

High color reproduction

Thanks to ELMO's advanced imaging technologies, students can enjoy crisp and natural color images even after being enlarged.



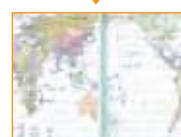
Enjoy the Natural color and Beauty with the TT-02RX.

Large Capture Area

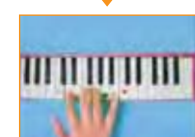
Even large materials can be shown

There are many occasions when teachers need to show large objects such as a map or demonstrate how to play a musical instrument.

The specially designed lens allows the TT-02RX to capture up to a full 11" x 17" spread.



Entire documents can be shown.



Precise manual manipulation can be shown easily.

Supplied Image Mate Software

Seize the moment.

Annotation Tool

The supplied Image Mate software offers an alternative to using an interactive white board. By utilizing Image Mate's annotation tools, you can draw lines, shapes and even write on the image with the free hand "pen" function.

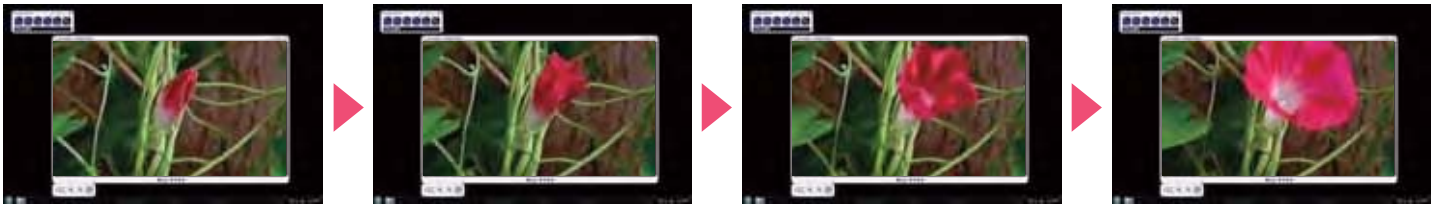


Record the lively movements and music with the Audio Visual recording.



Video with Audio Recording & Time Lapse Photography

The enhanced Image Mate software offers both Video with Audio recording and Time Lapse photography. Video with Audio recordings are saved as AVI files, and Time Lapse photography can be saved as AVI or JPG files. Moreover, with the Time Lapse feature, images can be captured and stored from intervals as little as one second up to 24 hours.



Record the change over time using the Time Lapse photography.

TT-02RX's Great Partners

SD Card

Saving students work is as easy as pressing a button. By utilizing the SD card port, a teacher can capture class work or display photos taken by a digital camera. The TT-02RX supports standard SD and SDHC cards.



PC

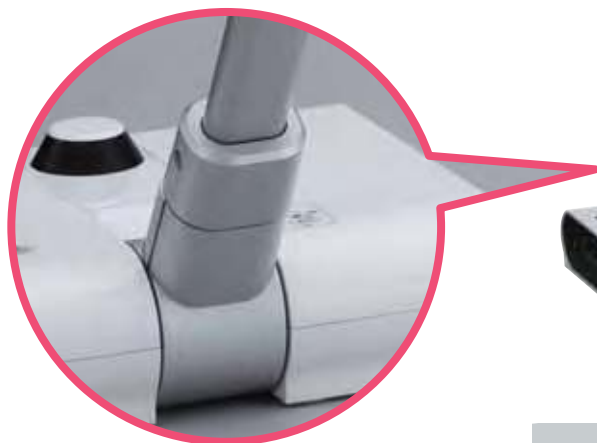
The TT-02RX is equipped with a USB port for easy connection with a PC. The accompanying Image Mate software lets you easily monitor or capture any image on your PC and control the TT-02RX from a PC.



Free-Angle Camera Head & Arm

Gives you great flexibility.

The camera head and arm pivots and rotates to virtually unlimited positions. This flexibility helps teachers emphasize key points of instruction. Additionally, the arm's solid construction holds an image position without vibration.



Its robust design makes the TT-02RX the ideal tool to be used everyday in the classroom.



Microscope



Microscope images can be enlarged and shared with an entire class. The supplied Microscope Attachment simplifies the positioning between the TT-02RX and a microscope eye-piece.



Interactive Whiteboard, Digital TV, and Projector

The TT-02RX can be used with variety of projective environments.



Digital TV



Projector



Interactive Whiteboard

TT-02RX Specifications

Model	TT-02RX	
Camera	Image pick-up device	1/3" CMOS, 1,490,000 pixels
	Total pixels	(H) 1384 x (V) 1076
	Effective pixels	(H) 1329 x (V) 1049
	Frame rate	Max. 30 frames/sec.
	Resolution	Analog RGB output : (H) 800 x (V) 800 TV lines or more Video output : (H) 500TV lines or more
Optics	Zoom	Powered, 5.2x Optical
	Lens	F2.8-3.2 f=3.85mm - 20.02mm
	Shooting area	SXGA : Max. 16 3/8" x 13" (417x331mm) Min. 3 5/8" x 2 7/8" (92x74mm) WXGA : Max. 16 3/8" x 9 3/4" (417x246mm) Min. 3 5/8" x 2 1/8" (92x56mm) XGA : Max. 16 3/8" x 12 1/8" (417x309mm) Min. 3 5/8" x 2 5/8" (92x69mm)
Functions	Focus	Auto/Manual
	White balance	Full auto/One-push/Manual
	Negative/positive conversion	Provided
	Image mode	Text1/Text2/Text3/Graphics1/Graphics2
	Edge enhancement	Provided
	Color/ B&W selection	Provided
	Freeze	Provided
	Digital zoom	8x
	Gamma setting	Provided
	Graphical OSD (On Screen Display)	Provided
	Slide show	Provided (SD image data)
	Image save	Provided (SD card)
	Image rotation	Provided (0°/180°)
	State presetting	Up to 4 user settings
	Annotation	Provided (on PC screen)
	Brightness control	Auto (W/Level adjustment)/Manual
	Zoom Sync. Focus	Provided
	Microscope mode	Provided
	Scroll	Provided (in digital zoom)
	Mask function	Provided
	PinP (Picture-in-Picture)	Provided
	Highlight function	Provided
Interface	Input selection	Main/External
	Analog RGB output	SXGA : 1280x1024@60Hz WXGA : 1280x800@60Hz XGA : 1024x768@60Hz
	VIDEO output	Provided (C-Video)
	RGB input	Provided (x1)
	Recorder terminal	Provided (for optional desktop recorder)
Lighting	USB port	Provided (USB2.0 x1)
	SD card slot	Provided (x1)
	Illumination lamp	Provided (White LED)
	Accessories	AC adapter, Power cord, Analog RGB cable 78 3/4" (2m), Removable stage, Magnetic sheet, Anti-glare sheet, Dust cover, Instruction manual, IR remote control, USB cable 70 3/4" (1.8m), Utility software (Image Mate) CD-ROM, Microscope attachment, Strap for IR remote control TWAIN DS driver
	Security slot	Provided
Others	Power source	12VDC (AC adapter AC100 - 240V)
	Power consumption	15W (AC adapter included)
	Dimensions (W x D x H)	7 3/4" x 10" x 17 1/2" (195 x 254.5 x 444.5 mm) (Folded) 13 7/8" x 14 5/8" x 16 1/4" (350 x 370.5 x 411.5 mm) (Set Up)
	Weight	Approx. 6.39 lbs (2.9kg)

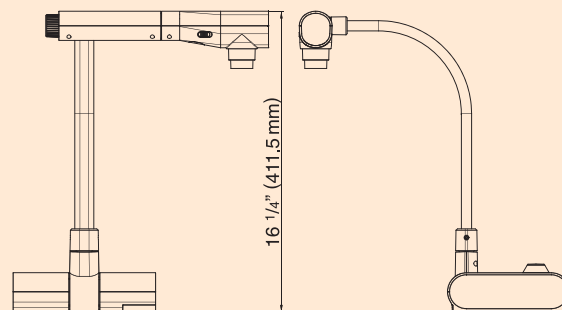
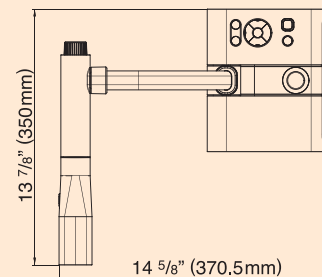
Design and specifications are subject to change without prior notice.

The images on this brochure are simulated.

"ELMO" is a trademark or registered trademark of ELMO COMPANY, LIMITED.

Other brand names and product names may be trademarks or registered trademarks of their respective owners.

Profile



What is a Document Camera?

Please visit our new website introducing you to the useful and effective ways of using the document camera. Let's start ICT in education with the document camera!

<http://www.elmo.co.jp/doc-cam/>

ELMO's Helping to Provide a Greener Future for Our Children

The ELMO products comply with RoHS Directive 2002/95/EC (Restriction Of the use of certain Hazardous Substances in electronic equipment). This compliance helps to ensure a healthier and greener environment for all our children.



ELMO CO.,LTD. is one of the sponsors for Japan Committee Vaccines for World's Children (JCV).

JCV operates under basic guidelines and objectives of the "Children's Vaccine Initiative (CVI)" founded in 1990 by UNICEF, WHO, UNDP, the Rockefeller Foundation, and the World Bank.

ISO 9001
ISO 14001

ELMO CO.,LTD. (Head Office and Factory)'s QMS/EMS has been registered to ISO 9001 & 14001 : 2004.



ELMO CO., LTD.

6-14, Meizen-cho, Mizuho-ku
Nagoya, 467-8567, Japan
E-mail : overseassales@elmo.co.jp

Distributed by

Additional technical information is available from any of the following subsidiary companies:

ELMO USA Corp.

Headquarters
1478 Old Country Road
Plainview, NY 11803-5034, U.S.A.
Tel. (516) 501-1400
Fax. (516) 501-0429
E-mail : elmo@elmousa.com
Web : <http://www.elmousa.com>

West Coast Branch
Cypress Pointe Business Park
5676 Corporate Avenue
Cypress, CA 90630, U.S.A.
Tel. (714) 828-8457
Fax. (714) 828-8429

ELMO (Europe) G.m.b.H.

Neanderstr. 18
40233 Düsseldorf, Germany
Tel. (0211) 386470
Fax. (0211) 376630
E-mail : info@elmoeurope.com
Web : <http://www.elmoeurope.com>



This brochure is printed with soy ink.

Printed in Japan (ST) 09/2009