

Smart Clip

INSTRUCTION MANUAL

Please read this manual carefully before using this product and keep it for future reference.

IMPORTANT SAFEGUARDS

Please read all precautions and warnings before starting to use.

The information is provided to ensure proper operation of this product and will prevent you or others from personal injury or loss of assets.

Review the following symbols so that you understand them before reading the rest of the manual. Please read carefully and keep the manual in a safe place for future reference.

	DANGER Ignoring the warning and operating the system incorrectly may subject the user to an extremely high risk of injury or death.
	WARNING Ignoring the warning and operating the system incorrectly may subject the user to possible risk of injury or death.
	CAUTION Ignoring the warning and operating the system incorrectly may subject the user to risk of injury or loss of assets.

DANGER

- Do not attach Smart Clip and QBiC MS-1 outside a car, motorbike or bicycle.
- Smart Clip is not designed to be attached to a car, motorbike or bicycle.

WARNING

- Verify the following before you use Smart Clip with QBiC MS-1.
 - There is no damage in Smart Clip.
 - QBiC MS-1 is firmly attached to Smart Clip.
 - The screws are firmly tightened.
 - Smart Clip is firmly attached to the object.

- Keep Smart Clip, its accessories, package or packing materials out of baby's reach.
 - They could choke or injure a baby if swallowed. Contact a doctor immediately if this happens.

- Do not install Smart Clip in areas where salt erosion or corrosive gas is produced.
 - Smart Clip will be damaged and may cause QBiC MS-1 to drop accidentally, leading to injury or malfunction.

- Verify the strength of the object to which Smart Clip is to be attached.
 - If the object is not strong enough, Smart Clip and QBiC MS-1 may drop accidentally, leading to injury or malfunction.

- Do not attach anything other than QBiC MS-1 to Smart Clip. Do not use screws other than supplied with Smart Clip.
 - QBiC MS-1 may drop due to insufficient support, leading to injury or malfunction.

CAUTION

- Do not clean Smart Clip with strong solvents such as thinner and benzene.
 - This may damage the quality of rubber material.
 - Clean Smart Clip only with a dry, soft cloth. In case of heavy dirt, wash lightly with fresh water. Then wipe it with a dry, soft cloth.

- Do not use Smart Clip in hot places or under strong sunlight for a long period of time.
 - Excessive heat may damage the quality of Smart Clip or change its shape, causing QBiC MS-1 to drop due to insufficient support, leading to injury or malfunction.

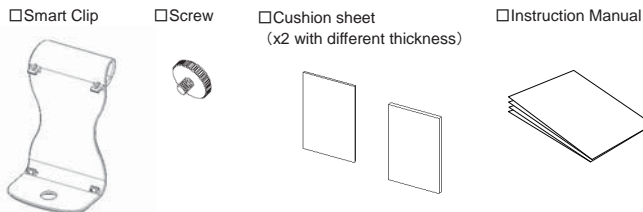
- Do not move Smart Clip with excessive force when screws are tightened.
 - It may cause the screw to become loose or damage the screw, leading to malfunction.

- Depending on the shape of the object, Smart Clip may not be installed.
 - Do not force to install Smart Clip. It may damage the object.

- Do not swing the object around with QBiC MS-1 attached with Smart Clip.
 - It may cause QBiC MS-1 and Smart Clip to be detached from the object.

We recommend to use a protective sheet and the like to protect your device when attaching the clip to a device which is susceptible to damage such as a smartphone.

WHAT'S IN THE BOX



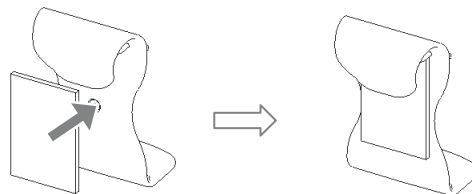
※Screw, Cushion sheet and Instruction Manual are in the box when it's sold individually.

HOW TO USE

◎You will be able to attach QBiC MS-1 to a plate-like object with up to 16mm thickness by using Smart Clip.

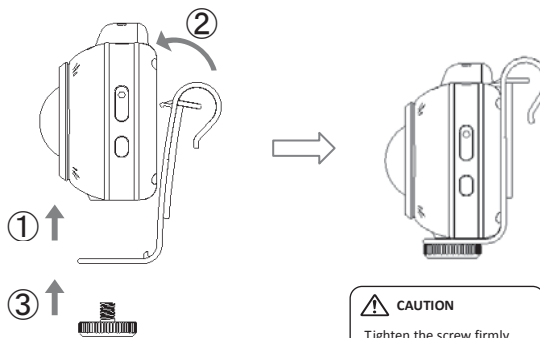
1. Attach the supplied Cushion sheet to Smart Clip.

Choose the appropriate type of Cushion sheet according to the thickness of the object and attach it to the back of Smart Clip.



2. Attach Smart Clip to QBiC MS-1. Then fix it with the screw.

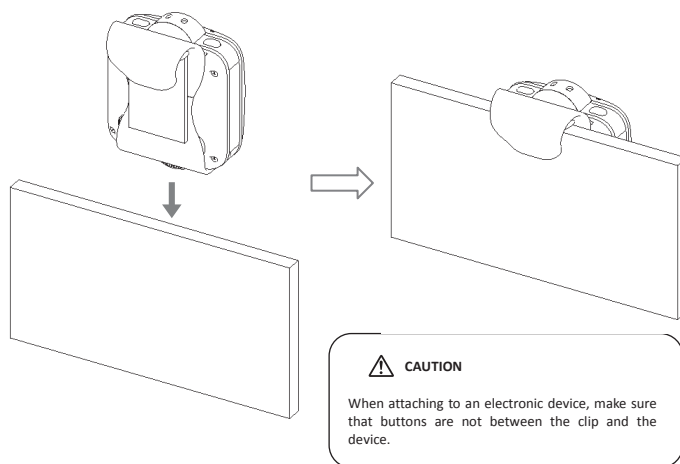
Insert the claws on Smart Clip into the holes on the back of QBiC MS-1. Then tighten the screw into the tripod thread of QBiC MS-1.



CAUTION
Tighten the screw firmly.

3. Attach Smart Clip to the object.

The clip of Smart Clip will firmly hold the object.



CAUTION
When attaching to an electronic device, make sure that buttons are not between the clip and the device.

*Please refer to QBiC instruction manual for shooting information.

Installable device: QBiC MS-1

※Do not attach objects other than specified to this products.

PLEASE NOTE:

- Contents of this manual may be subject to change without notice. Please check the latest version from the following QBiC MS-1 website. <http://www.elmoqbic.com/>
- We shall not be liable for any direct, indirect, punitive, incidental, special, consequential or exemplary damages, including but not limited to loss of profits or claims by third party, resulting from your use of this product.

●Contact Us

Please refer to the above-mentioned QBiC Website.