

Pan/Tilt/Zoom Camera  
PTC-100S  
Control Software  
Instruction Manual

ELMO CO., LTD.

2002.2

# Contents

<b>1. INTRODUCTION .....</b>	<b>3</b>
<b>2. SYSTEM REQUIREMENTS .....</b>	<b>3</b>
<b>3. SETTING UP .....</b>	<b>4</b>
<b>3-1.CONNECTION EXAMPLES FOR THE CAMERA .....</b>	<b>4</b>
<b>3-2. PIN ASSIGNMENT (1) .....</b>	<b>4</b>
<b>3-3. PIN ASSIGNMENT (2) .....</b>	<b>5</b>
<b>4. INSTALLING SOFTWARE.....</b>	<b>6</b>
<b>5. OPERATION PROCEDURES .....</b>	<b>7</b>
<b>5-1.STARTINGUP .....</b>	<b>7</b>
<b>5-2. MAIN MENU .....</b>	<b>7</b>
<b>5-2-1. CAMERA OPERATION .....</b>	<b>8</b>
<b>5-2-2. MAIN MENU .....</b>	<b>9</b>
<b>5-3. S ETUP FOR SPEED .....</b>	<b>10</b>
<b>5-4. S ETUP OF CAMERA .....</b>	<b>11</b>
<b>6. TROUBLESHOOTING HINTS .....</b>	<b>12</b>

Program© 2002 ELMO COMPANY, LIMITED  
Documentation© 2002 ELMO COMPANY, LIMITED  
© 2002 ELMO COMPANYLIMITED All rights reserved.

- . Microsoft and Windows are registered trademarks of Microsoft Corporation in the U.S. and other countries.
- . The system names and product names mentioned in this calligraphy are the registered trademark of each development maker or a trademark in general.

This program is protected by copyright law and international treaties.

Unauthorized reproduction or distribution of this program, or any portion for it, may result in civil and criminal penalties, and may be prosecuted to the maximum extent possible underlaw.

ELMO Co., Ltd. provides this documentation without warranty, term, or condition of any kind, either implied or expressed, including, but not limited to, the implied warranties, terms or conditions of merchantability, satisfactory quality, and fitness for a particular purpose. ELMO may make improvements or changes in the product(s) and/or the program(s) described in this documentation at any time.

## 1. INTRODUCTION

This software is for operation of ELMO Pan/Tilt/Zoom camera model PTC-100S on the PC (Personal computer). By using this software, pan/tilt/zoom can be done through the PC in the same fashion as the remote controller supplied with the PTC-100S.

## 2. SYSTEM REQUIREMENTS

**The following requirements must be available on your PC to run this software.**

\*Microsoft Windows® 98 Second Edition (English version) or the later

\*RS-232C port

Note:

Please read the instruction manual of your PC for setting the RS-232C port.

### **Operating system**

\*Microsoft Windows® 2000 Professional English version

\*Microsoft Windows® 98 Second Edition English version

\*Microsoft Windows® Me English version

Note:

The operating systems have been tested and are confirmed to be fully functional with this software.

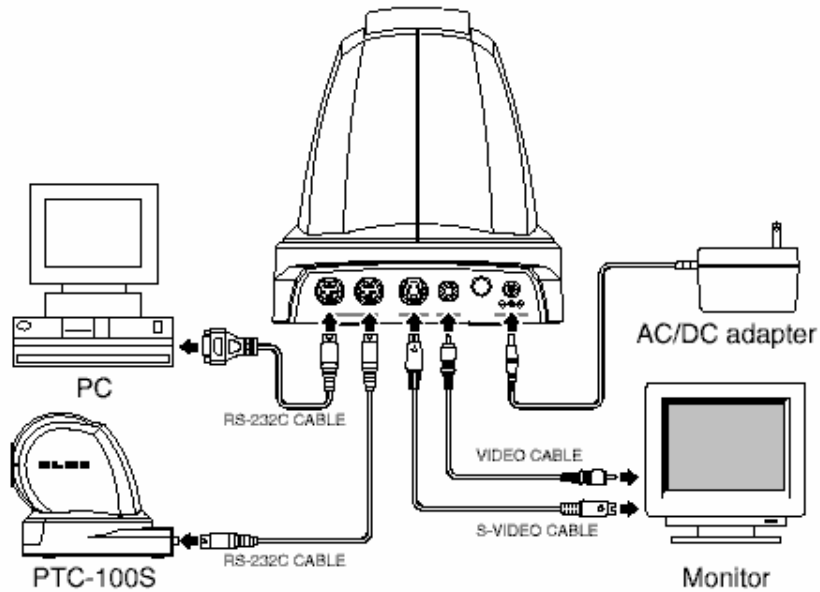
We cannot be responsible for any operating systems non-functionality and the software operation is dependent on your computer setup.

This software is written using "Microsoft Visual Basic 6.0 English edition" on "Microsoft Windows 2000 Professional English edition"

### 3. SETTING UP

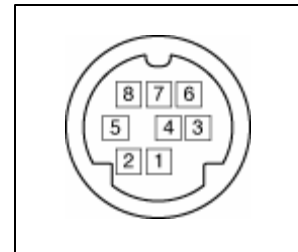
Please confirm the connection between the camera and a PC.

#### 3-1.CONNECTION EXAMPLES FOR THE CAMERA



#### 3-2. PIN ASSIGNMENT (1)

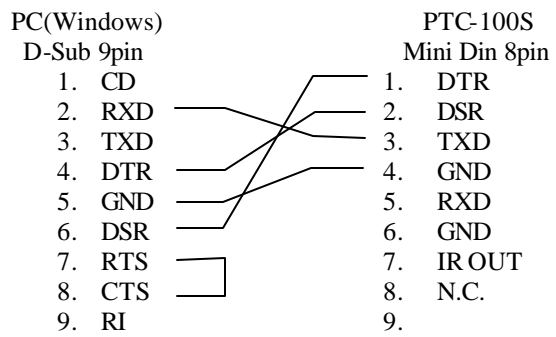
No	Code	Name
1	DTR	Data Transmission Ready (OUTPUT)
2	DSR	Data Set Ready (INPUT)
3	TXD	Transmit Data (OUTPUT)
4	GND	Ground
5	RXD	Receive Data (INPUT)
6	GND	Ground
7	IR OUT	IR Commander Signal (OUTPUT)
8	N.C.	No Connection



RS-232C IN

### 3-3. PIN ASSIGNMENT (2)

#### PC(Windows) (D-Sub 9pin) - PTS-100S



## **4. INSTALING SOFTWARE**

### **How to install**

1. Open the Windows Explorer. And double -click the install program (setup.exe)
2. Follow the on-screen instructions to install.

### **How to uninstall**

1. Select [Control Panel] - Double -click [Add/Remove Programs] – [PTC-100S Control Software] Click the “Add/Remove” button to proceed with uninstalling.

#### **Note:**

If you can't uninstall this software in the above way, double-click on "UNWISE.EXE" inside the folder that this software was installed in.

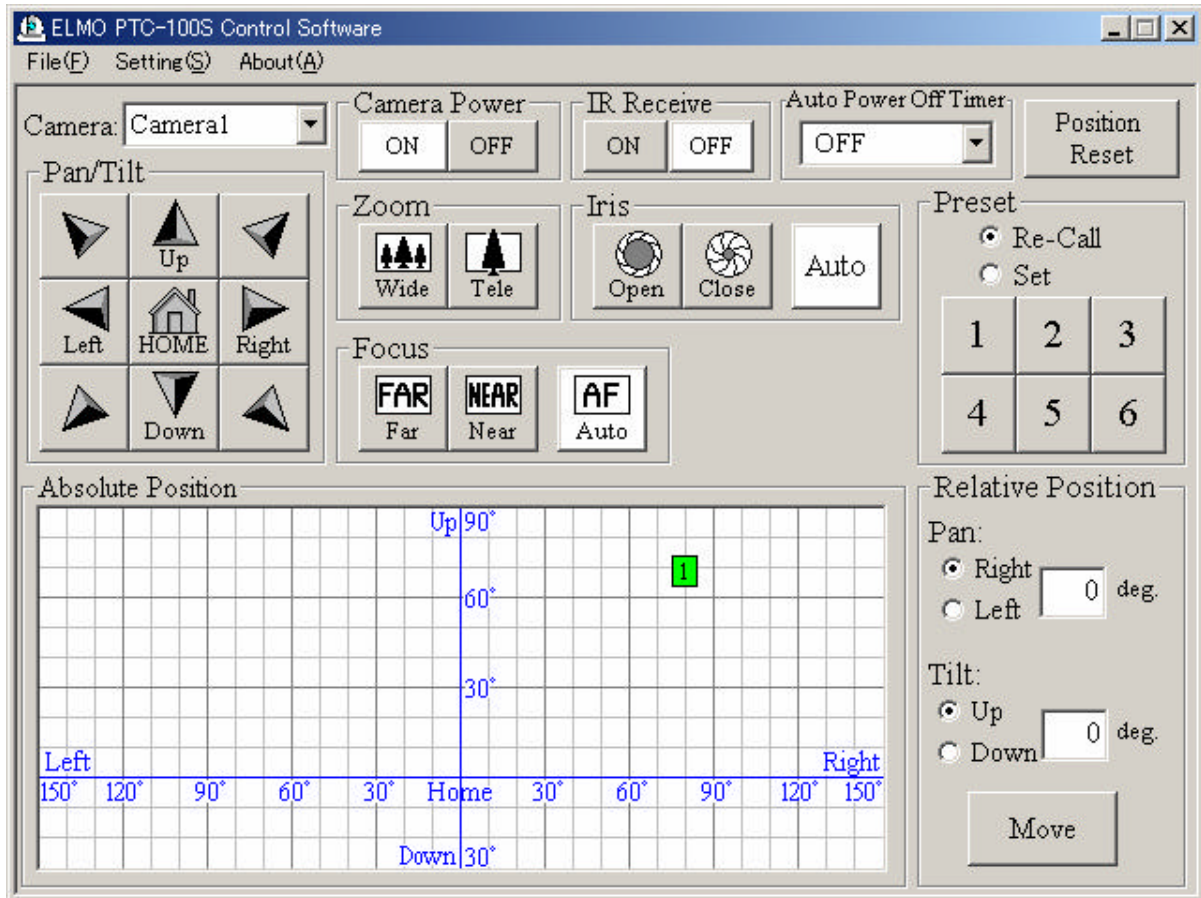
## 5. OPERATION PROCEDURES

### 5-1. STARTING UP

“Start” - “Program” - “ELMO PTC-100S”, select “PTC-100S Control Software.”

Or click the shortcut of “PTC-100S Control Software” on the desktop.

### 5-2. MAIN MENU



## **5-2-1. CAMERA OPERATION**

### **Camera**

Selects a camera to control. When several cameras are connected, all cameras can be controlled by choosing "All Cameras".

Note: The receiver of the remote controller for the selected camera is set to off.

### **Camera Power**

Controls the camera power (standby/power ON). The emphasized button (the color of the button is white in the figure) shows the current state of power supply of the camera.

Note: When a camera is in standby mode, some functions of the menu do not work except for ON button of the camera power and selection of camera to control and several other functions.

### **IR Receiver**

Switches the ON/ OFF of the remote controller. The emphasized button (the color of the button is white in the figure) shows the current state of the remote controller.

### **Auto Power Off Timer**

Selects the time until a camera switches to the standby mode.

### **Pan/Tilt**

Operates Pan/Tilt. While the button is pressed, the camera goes on rotation.

### **Home**

Returns to Home position. Click the button to return to Home position.

### **Zoom**

Operates Zooming. While the button is pressed, the camera continues zooming.

### **Focus**

Operates Focusing. Click the Auto button to focus automatically. While the Far or Near button is pressed, the camera continues focusing to Far or Near position.

### **Iris**

Operates iris. Click the Auto button to iris automatically. Press the Open or Close button to operate iris accordingly.

### **Preset**

Rotates the camera to the preset position, or memorizes the position. When the "Re-call" is selected, the camera rotates to the preset position of the selected number. Select the "Set" to memorize the present position of the selected number.

### **Absolute Position**

Indicates the camera's direction roughly, the camera rotates in that direction by clicking the position inside of the chart.

### **Relative Position**

Click the "Move" button to rotate the camera by the inputted angles to the right/left and the top/down from the present position.

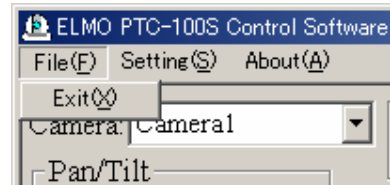
## 5-2-2. MAIN MENU

### File(F) menu

Indicates the file menu. (Refer to a right figure.)

### File(F) – Exit(X)

Exits this application.



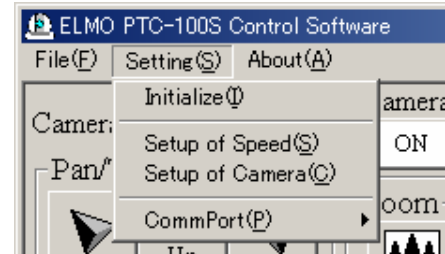
### Setting(S) menu

Indicates the setting menu of camera operation.

(Refer to a right figure.)

### Setting(S) - Initialize(I)

Initializes the camera setting. (If the camera isn't initialized, the camera can't be controlled.)



### Setting(S) - Setup of Speed(S):

Opens the window to set the speeds for Pan, Tilt, Zoom, and Focus. (Refer to “5-3. SETUP OF SPEED.”)

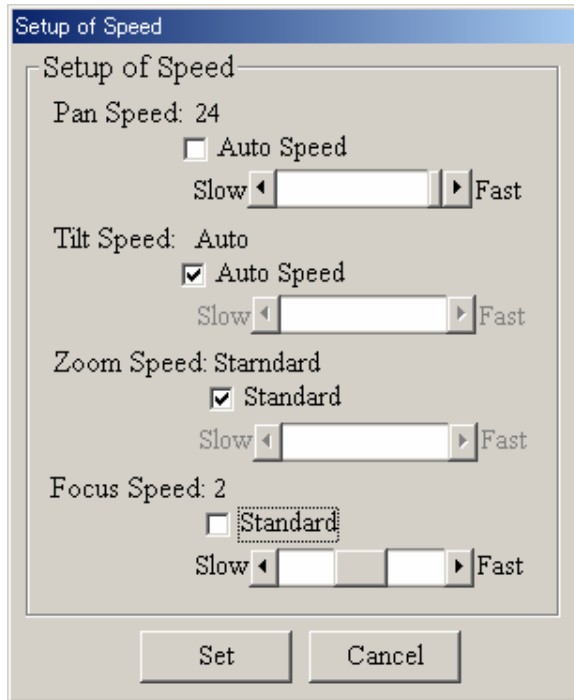
### Setting(S) - Setup of Camera(C)

Opens the window to setup of camera (Backlight, AP Gain, White balance, etc.). (Refer to 5.4. SETUP OF CAMERA)

### Setting(S) - CommPort (P)

Selects the connected PC port. (COM1 is selected at default.)

### 5-3. SETUP FOR SPEED



#### **Pan Speed**

Sets the Pan speed in manual operation. When “Auto Speed” is selected, the camera pans at the most suitable speed according to the zoom position.

#### **Tilt Speed**

Sets the Tilt speed in manual operation. When “Auto Speed” is selected, the camera tilts at the most suitable speed according to the zoom position.

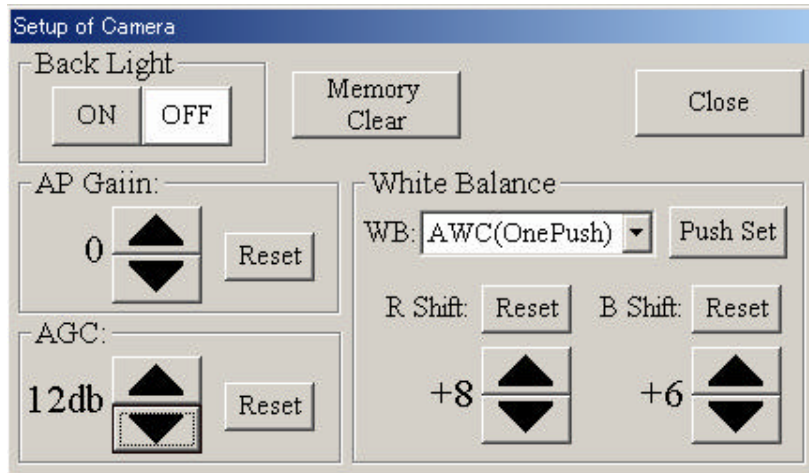
#### **Zoom Speed**

Sets the Zoom speed in manual operation. When “Standard” is selected, the camera zooms at middle value “4”.

#### **Focus Speed**

Sets the focus speed in manual operation. When “Standard” is selected, the camera focuses at middle value “2”.

## 5-4. SETUP OF CAMERA



### Back Light

Switches ON/OFF of the back light setting. The emphasized button (the color of the button is white in the figure) shows the current state of the back light.

### AP Gain

Adjusts the AP (aperture) Gain. The range of adjustable value is from -6 to +9. The value changes one step per click.

### AGC

Adjusts the AGC (automatic gain control). The adjustable value is 7 steps at 0db, 4db, 8db, 12db, 16db, 20db, and 24db. The value changes one step per click.

### White Balance

Selects the White balance. The selectable modes : ATW (normal auto), AWC (one-push white balance), Indoor, Outdoor and Light.

### R Shift, B Shift

Adjusts the R (red) Shift and B (blue) Shift of the white balance. The value changes one step per click.

### Push Set

When the AWC (one-push white balance) mode is selected, click the “Push Set” button to set the value of R (red) Shift and B (blue) Shift.

### Memory Clear

Resets the settings of the camera to the factory-settings.

### Close

Returns to the “5-2. MAIN MENU” after saving the current camera settings.

## 6. TROUBLESHOOTING HINTS

Check the following items in case of any trouble.

\*Is camera power supply cable connected properly?

\*Is RS-232C cable connected properly?

Error message	Possible cause/remedy
Application is currently running.	Other applications are already running. Close all applications.
Selected port does not exist. Select another port.	Selected COM port does not exist. Select the COM port that is connected to the camera
No camera has been detected on the selected port. Confirm that a camera is connected to the selected port.	The camera is not connected. Connect the camera to the selected COM port or select the COM port that is connected to the camera.
Return value from the camera can't be received normally. Initialize it again when this message comes out many times.	The returned value from camera can not be received normally. Confirm the connection of the PC and the camera again, and try to put the main power supply of the camera on again.
The camera can not be found. Please make sure a camera is connected to the selected port and power is on. After confirmation, initialize.	The PC and the camera aren't connected properly, or the main power supply of the camera is off. Connect the PC and the camera properly, and turn on the main power supply of the camera.