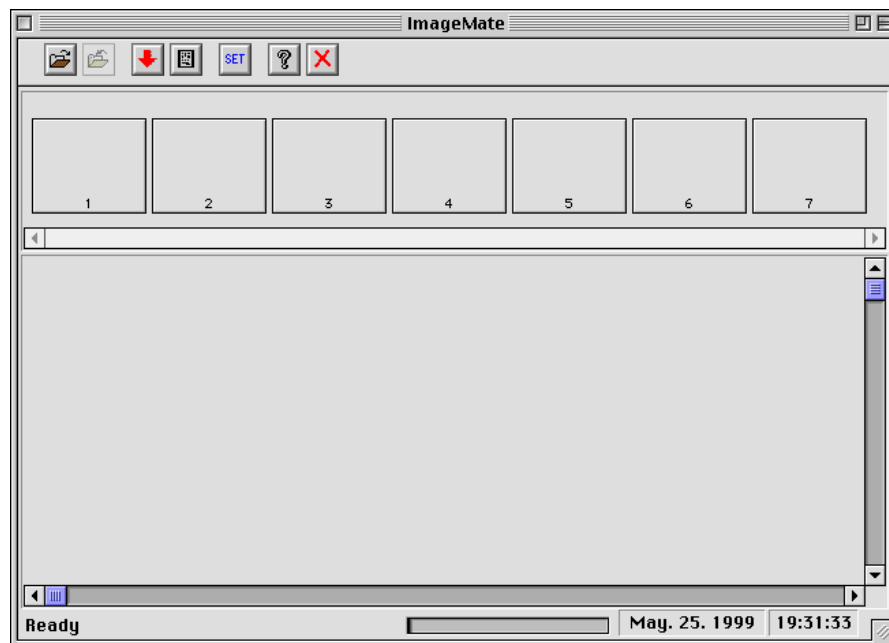


Instruction Manual for [Image Mate]

Macintosh Ver.2.0




Starting [Image Mate]

Choose the Program (Icon) and click to start.

Setting up [Image Mate]

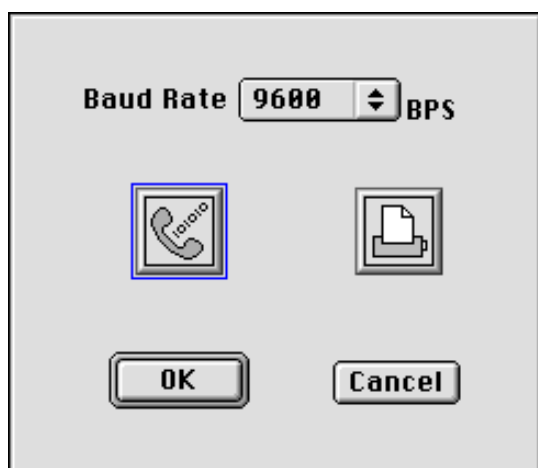
This procedure configures the communication environment between a [Visual Presenter] and your PC.

Set up the [Visual Presenter] according to the instruction manual for the Visual Presenter before the following steps.

Click the  button to display the setting dialog, then select port No. and baud rate, and press the [OK] button. If an error message appears, repeat the steps mentioned above.

Once the setting is done, the setting value remains in the memory.

Re-setting of port No. and baud rate is not required unless the setting of the [Visual Presenter] is changed.



If overflow error appears, lower the baud rate.

Controlling [The Visual Presenter]

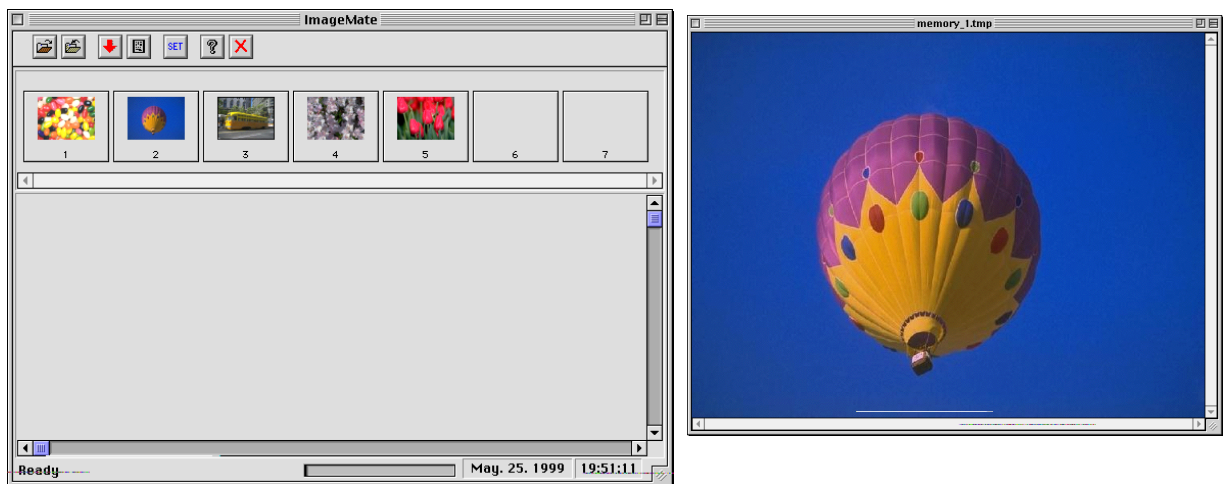
(1)Download images from the memory of the [Visual Presenter].

Click the  button to download the images to the PC.

Then thumbnail images appear in the upper section of the screen.

Each number of images corresponds to the memory number of the [Visual Presenter.]

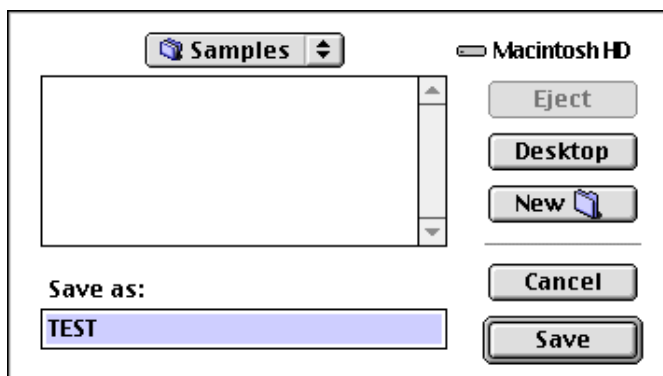
The image can be enlarged in the separate window by double-clicking the required thumbnail image.



(2)Save images into the PC

Click the  button to save the image.

The File Dialog appears, then enter a file name.




If a thumbnail image on the upper section is being selected, the selected image is saved.

If no image is being selected, all of the images are to be saved with numbers in a row.

Click anywhere other than the upper section in which the images are on, to cancel the selection. The extension (JPG) of the file name will be automatically added.

(3) Upload images from the PC to the [Visual Presenter]

The image on the PC must be set in the program before the following steps.

Click the  button to open the folder in which the images on the PC are saved.

Click the [OK] button after selecting the folder.

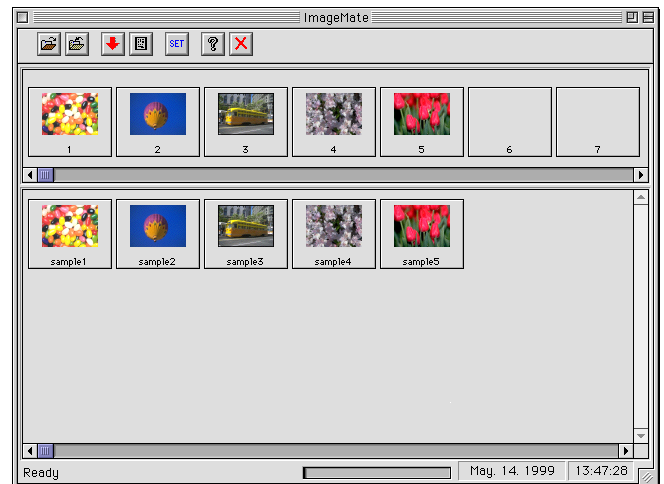
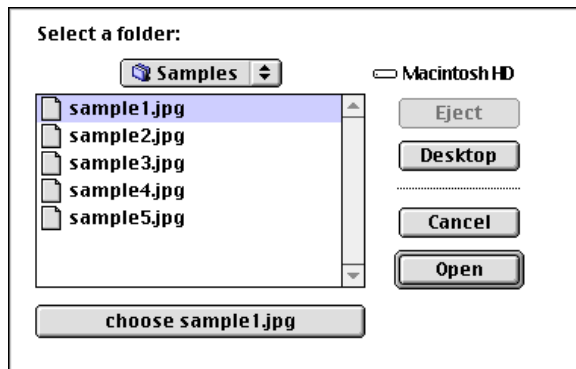
Thumbnail pictures are displayed at lower section.

Up to 35 images can be displayed.

If the folder has more than 35 images, transfer these remaining images to another folder.

Select an image from the lower section, and keep a left button of mouse clicked, then release it at upper section (drag and drop).

This procedure sends the image to the [Visual Presenter].




(4)Download images from the [Visual Presenter] to a folder

The images saved in the [Visual Presenter] can be download to the folder shown in the lower section by drag and drop .

Note: The images in the folder must be less than 35.

(5)Remote Control

Click the  remote button, then the window for remote control panel appears. Most of the function are same with the supplied wireless remote controller so that this section explains only the differences.

Click the **LOCK** button to prohibit controls from the remote controller.

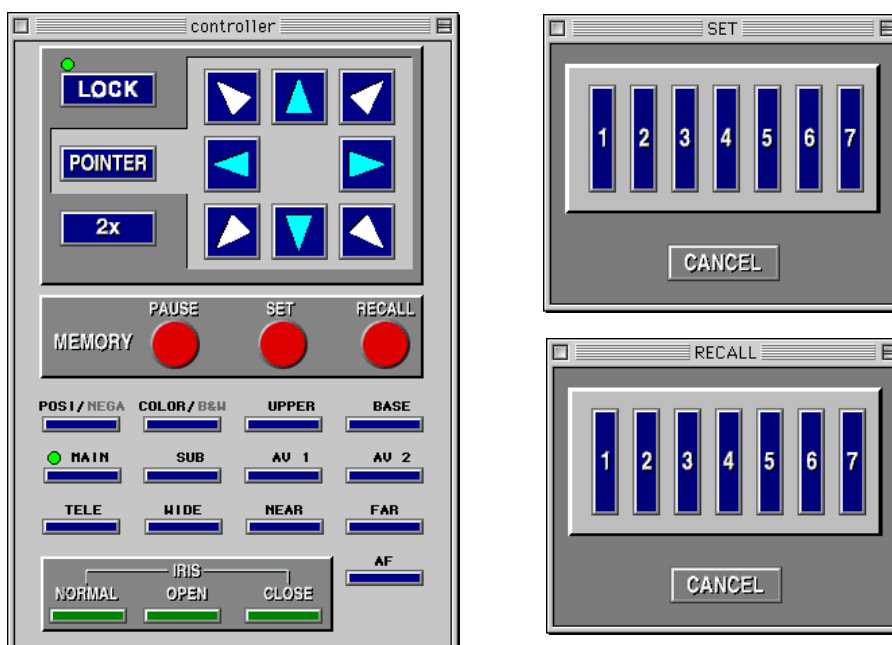
Click it again to release them. The green lamp lights when locked.


Click the **POINTER** button to control the arrow pointer.

Click it again to release it. This button becomes active when remote control is allowed.

Click [SET], [RECALL] buttons then the selection dialog window appears.

Select the image. Each number of the buttons corresponds to the memory.



Click the  button to close the remote control window.

[SET], [RECALL] windows close when the **CANCEL** button is clicked.

The format of image data

Only standard JPEG(Joint Photographic Exports Group) format data can be used.

The image data produced on PC with the preview data (the preview data (the thumbnail) at Photoshop, etc.) can not be used.

TIFF(Tag Image File Format) data of JPEG style is also not useable.

Capable image sizes are :

NTSC: 736 * 480 dots (EV-601AF, EV-6000AF)

640 * 480 dots (EV-701AF, EV-8000AF)

PAL: 736 * 568 dots (EV-6500AF PAL)

768 * 576 dots (EV-8500AF PAL)

and less than 64Kbytes.

Please use Photoshop or other application to change the aspect ratio if necessary.

* Image Mate is a registered trademark of ELMO Co., Ltd.

* The copyright of the Image Mate program belongs to ELMO Co., Ltd.

To alter this program without the expressed written consent of ELMO Co., Ltd. is prohibited by the law.

* ELMO Co., Ltd. and their subsidiaries are not responsible and assume no liability for the content or quality of the documents, or any error, claim or discrepancy they may contain.

* Macintosh is a registered trademark of Apple Computer, Inc.

* Photoshop is a trademark of Adobe Systems Incorporated.